

# EIT Community New European Bauhaus

## Enhance NEB 2025 Call Info Session

Call for Proposals for BP 2023-25 to scale-up the most promising Citizen Engagement and Co-Creation initiatives

25 March 2025



New European Bauhaus  
beautiful | sustainable | together



Community  
New European Bauhaus

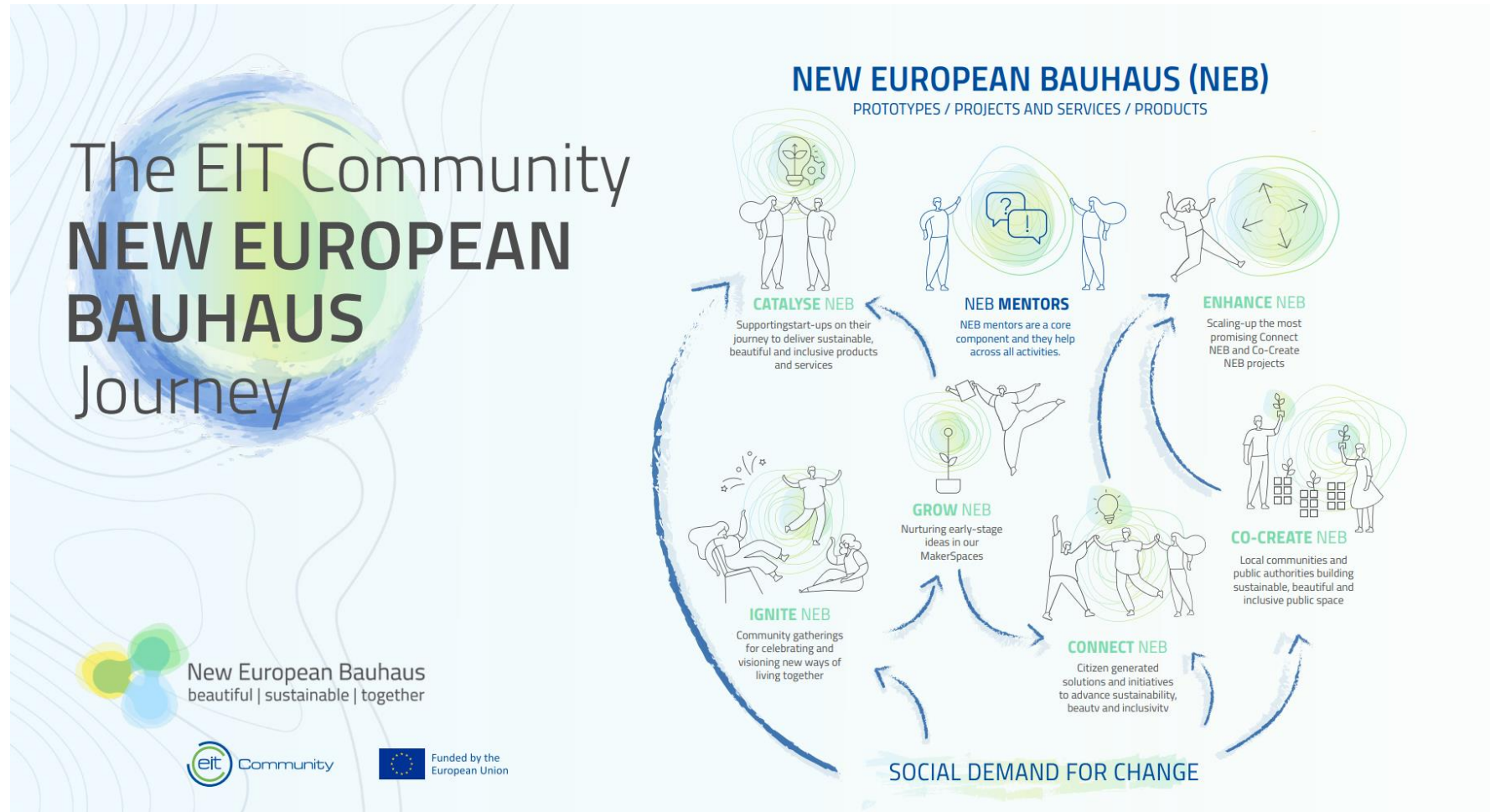


Funded by the  
European Union

# Agenda of Enhance NEB Partners Call Info Session

	25 March 2025 – 11:30-12:30	Speakers
11:30 11:45	<b>General information on the call</b> <ul style="list-style-type: none"><li>• Overview of EIT Community NEB</li><li>• Aim and objectives of the call</li><li>• KPIS &amp; Funding</li></ul>	<b>Maria Marrugat,</b> EIT Community Manager, EIT Urban Mobility
11:45 12:15	<b>General procedure</b> <ul style="list-style-type: none"><li>• Call Calendar</li><li>• Evaluation process</li><li>• Live application session NetSuite</li></ul>	<b>Maria Marrugat</b> & <b>Anne-Laure Aslanian,</b> Programme Manager, EIT Urban Mobility
12:15 12:30	<b>Questions &amp; Answers</b>	

# Translating the Green Deal into tangible change on the ground by placing culture and citizens at the core



## Aim of the call

- The Enhance NEB Call for proposals 2025 provides an opportunity for previously funded Connect NEB and Co-create NEB projects to **scale up** their **impact**. This initiative supports projects that strengthen their implementation in their **original location or replicate** their **solutions in new areas**.

## Call requirements

- Who can apply? **EIT Community NEB partners** that were part of a citizen engagement or co-creation of public space **projects funded during 2023 and 2024 which hasn't yet received funding from previous Enhance NEB calls**.
- Proposals must be presented by consortia of **minimum 2 and maximum of 4 entities**. The lead partner must be an eligible EIT Community NEB partner listed in Annex 1.
- Cities must be represented and can have an active role in the consortium or an observant role (no budget no active tasks assigned).
  - We define active role as having tasks assigned and consequently receiving or bringing budget to the project.
  - A **new** city, region or affiliated entity can participate as a partner by bringing co-funding but will not receive EIT funding .
  - Cities that are observants they are not considered formal partners (they don't count towards the minimum requirement of consortia) They need to attach a signed letter of intent.

## Scope of the activities

All activities will continue to address at least **one or more** of the New European Bauhaus Thematic Axes:

- RE-connecting with nature
- RE-gaining sense of community and belonging
- Prioritising the places and people that need it the most
- The need for long term, life cycle and integrated thinking in industrial ecosystem

## Expected outcomes, outputs and impacts:

All activities must achieve one of the expected outcomes:

- Outcome A: Higher/amplifying/completing the project's impact in the **same location** by further developing co-creation methodologies and broadening target groups ensuring a more holistic and sustainable approach.
- Outcome B: Higher/amplifying impact **beyond the former site at a new location** by replicating the project.

All proposals must meet at least 1 of the 3 expected outputs and impact:

- Products and services (including rapid product prototypes)
- Co-design of public space
- Social activation and non-labelled education and training activities

**All outputs aim to influence local policy/strategy to achieve ecosystemic change**

## Minimum of 2 KPIs of those below, being EITHE08.1 one of them

KPI Code	KPI Name	Description	Target
<b>EITHE08.1</b>	<b>Participants in non-labelled education and training</b>	<b>Number of successful participants in workshops, online training courses, and other education/training activities. Activities must have a clearly defined learning outcomes, and which carries out competency assessment method are applicable.</b>	<b>25</b>
KSN01	Innovation pilot scaling	Number of innovation product/ processes scaled by expanding or replicating a pilot or small scale project	1
KSN02	Demonstrations/pilots/living labs within a project that involve citizens/ local associations	Actively engaged an appropriate amount of citizens/community representatives of various age and social groups in running a demonstration/successful pilot/living lab* to encourage experimentation, research and the development of solutions	1
KSN03	Public Realm improvements	This KPI includes both: a) small-scale and temporary changes, using low-cost and scalable interventions, and b) permanent investment as part of a public realm action plan	1
CL04	Funding leveraged to support scale-up / diffusion of innovations to tackle climate change	Financing leverage to support the scale-up by: a) tracking funding pathways, b) monitoring co-investment, third-party funding, or c) through developmental and AI/big data tools	€ 1,000
CL05	Strengthened resilience to the unavoidable impacts of climate change	Number of people with strengthen climate resilience as an output of the project.	40
KIC-01	People engaged in targeted interventions	The number of people actively engaged through targeted interventions within activities that are supported by the KIC and encourage healthier and more sustainable behaviour. Actively engaged means a target audience taking part in an intervention through direct interaction.	20
KIC-04	Number of novel solutions/concepts designed and tested with support from KIC	The number of novel solutions/concepts designed and tested in the year N that have demonstrated potential for impact. The solution that is developed and tested needs to be ready to deploy, implement or execute, as part of the product, service, marketing or within a project.	1
KIC.B05.1	Transition towards greater circularity	Activities that lead to a reduction of material consumption (related to the process and/or product targeted) in the Enhance NEB programme	1
KIC.G05.1	Contribute to environmentally sustainable manufacturing	Activities that lead to more environmentally sustainable manufacturing (related to the process and/or product targeted) in the Enhance NEB programme.	1

## Project duration

**Up to 7 months** (from May 2025 till November 2025 the latest). To ensure the successful implementation there will be **2 mandatory deliverables** (intermediate on 30<sup>th</sup> Sept and final report on 5<sup>th</sup> December)

## Funding allocation

Up to **4 projects** will be awarded with a maximum of EIT funding of **45K€** per project. Co-funding of 20% of the total cost is a must.

Examples:

- Total cost of project 56,250K€: EIT funding 45K€, co-funding 11,250€ (which equals 20% of 56,250K€)
- Total cost of project 70K€: EIT funding 45K€, co-funding 25K€ (which equals above 20% of 70K€)

## Financial Sustainability

Financial Sustainability Mechanism is not a must but will be assessed positively in the evaluation criteria.

We aim to promote sustainable projects with a long-lasting impact, ensuring that the activities continue after the EIT Community NEB project is completed.

Applicants should describe how they intend to carry out the project, brief business plan for the longer term (eg other streams of funding, data exploitation)

## Proposal Submission

All proposals need to submit an application through **Netsuite** before the deadline, with a signed letter of intent (if applicable)

All proposals are expected to include the following:

- A description of the proposed solution or methodology to be piloted, including reasons to scale-up/replicate (why), **who** would benefit, **how** to achieve the goals, and **by whom** (role of each partner).
- An end-user **engagement plan** that targets specific audiences, that includes a description of the social demand.
- A description of **performance metrics to be used** to objectively evaluate the sustainability, inclusivity and aesthetic values as all proposals need to embed the 3 core NEB values.
- A description of **potential economic impact and potential time frame beyond this project** will be assessed. (Eg. strategic plan/brief outline of their business plan for the longer term; identifying other funding streams; explaining how data could be exploited for marketing or sales, etc)

Cities, regions or affiliated entities must provide evidence of at least one of the following options in the proposal:

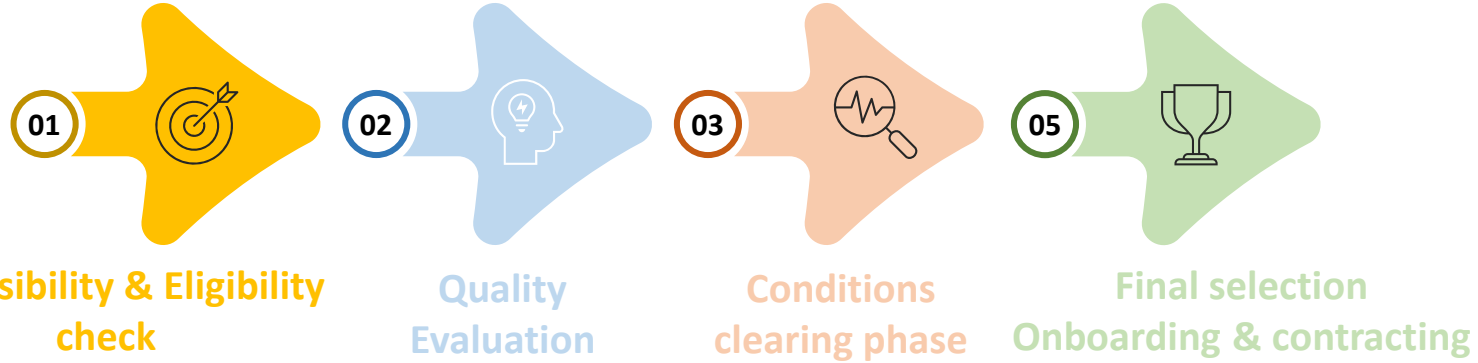
- **Option A:** an approved public realm infrastructure or availability of public space that can be improved by NEB approach
- **Option B:** Reference to an approved official local strategic document with an explanation of how and at what level the project contributes to achieve its targets, including a realistic and achievable plan.

## Call calendar\*

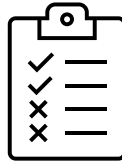
- **Call launch:** 10 March 2025
- **Call deadline:** **22 April 2025 at 17:00 CET in NetSuite**
- **Eligibility and admissibility check:** 23-24 April 2025
- **Quality evaluation of proposals:** End of April-Beginning of May 2025
- **Communication of results:** Beginning of May 2025
- **Tentative start of the projects:** Mid-May 2025 to 30 November 2025
- **Total EIT funding available:** 180.000 EUR (up to 4 projects of 45K EUR each)
- **Call website:** <https://www.eiturbanmobility.eu/call-for-proposals/enhance-new-european-bauhaus-call-for-partners-2025/>

\*This calendar is indicative. Dates might be subject to change. More information on the Call calendar and requirements in the Call website.

## EVALUATION & SELECTION PROCESS

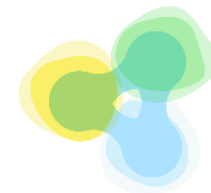


1. **Completeness**
2. **Registration of the applicants\***
3. **Eligibility of the applicants**
4. **Consortium composition**
5. **Letter of Intent\*** (if applicable)
6. **Co-funding rate\***



Section 4  
Call Manual

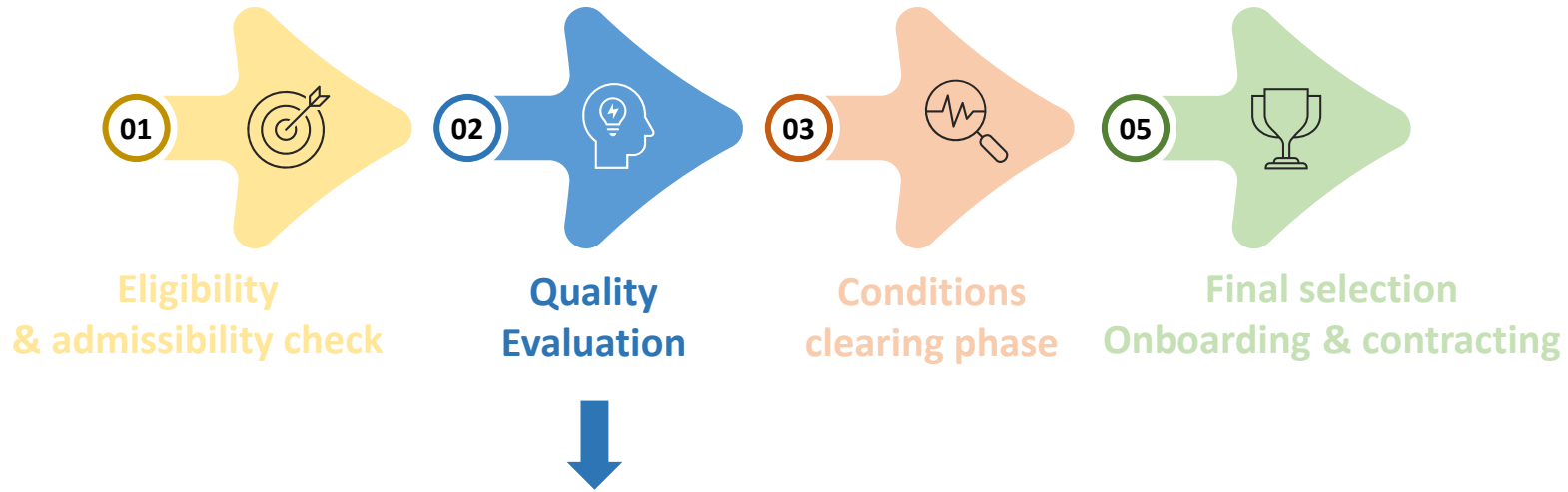
\*5 calendar days to correct the data



New European Bauhaus  
beautiful | sustainable | together



## Evaluation and Selection Process



Expert Evaluators will assess the **excellence, impact, and implementation** of the eligible proposals based on predefined evaluation criteria (next slides). They will produce a Summary Evaluation Report and give a final score per proposal (max. 50 points)

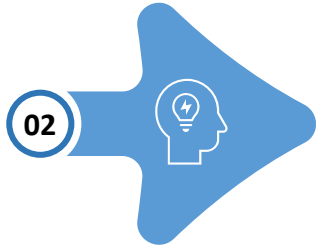
	Max score
Excellence	20 points
Impact	20 points
Implementation	10 points
Total points	50 points



New European Bauhaus  
beautiful | sustainable | together



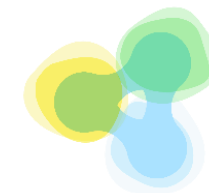
## Evaluation and Selection Process



### Quality Evaluation

1. Excellence and novelty	Max. scoring 20
1.1 The proposal objectives and activities are SMART (Specific, Measurable, Achievable, Realistic and Time-Bound).	5
1.2 The proposal integrates the three NEB values (sustainability, inclusivity and aesthetics) throughout the process, from defining the challenge to proposing a solution.	5
1.3 The proposal provides a clear description of the project's strategic importance and reasons to scale up/replicate the project (WHY) aligned with the city's planned public realm or the city's strategy and/or local action plan where the project takes place.	5
1.4 The proposal demonstrates its need and relevance for society, by engaging at least two target groups.	5

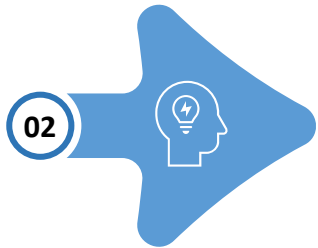
Score	
0	<i>None</i>
1	<i>Very poor</i>
2	<i>Poor</i>
3	<i>Fair</i>
4	<i>Good</i>
5	<i>Excellent</i>



New European Bauhaus  
beautiful | sustainable | together



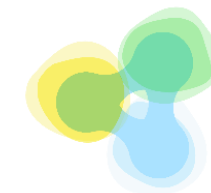
## Evaluation and Selection Process



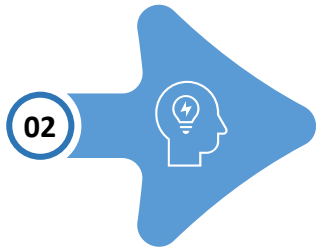
### Quality Evaluation

2. Impact: social, economic, financial, and general sustainability	Max. scoring 20
2.1 The proposal provides a tailored end-user engagement plan to target audiences, strengthening gender balance, diversity and inclusion.	5
2.2 The proposal provides a clear dissemination and communication strategy regarding the activities, impacts and outcomes.	5
2.3 The proposal's expected outcomes are clearly defined and measurable. Adequate performance metrics and target values of the proposed solution are provided to objectively evaluate each of the NEB values: sustainability, inclusivity and aesthetic.	5
2.4 The proposal's potential economic impact is outlined to ensure potential future durability and transferability beyond this grant.	5

Score	
0	<i>None</i>
1	<i>Very poor</i>
2	<i>Poor</i>
3	<i>Fair</i>
4	<i>Good</i>
5	<i>Excellent</i>



## Evaluation and Selection Process



### Quality Evaluation

3. Implementation: quality and efficiency	Max. scoring 10
3.1 The proposed budget is clear and in line with a structured workplan, considering tasks, deliverables, outputs and outcomes.	5
3.2 The proposal presents a clear risk mitigation plan and describes management structures specifying the team's experience and their role within the project to ensure that it is effectively delivered.	5

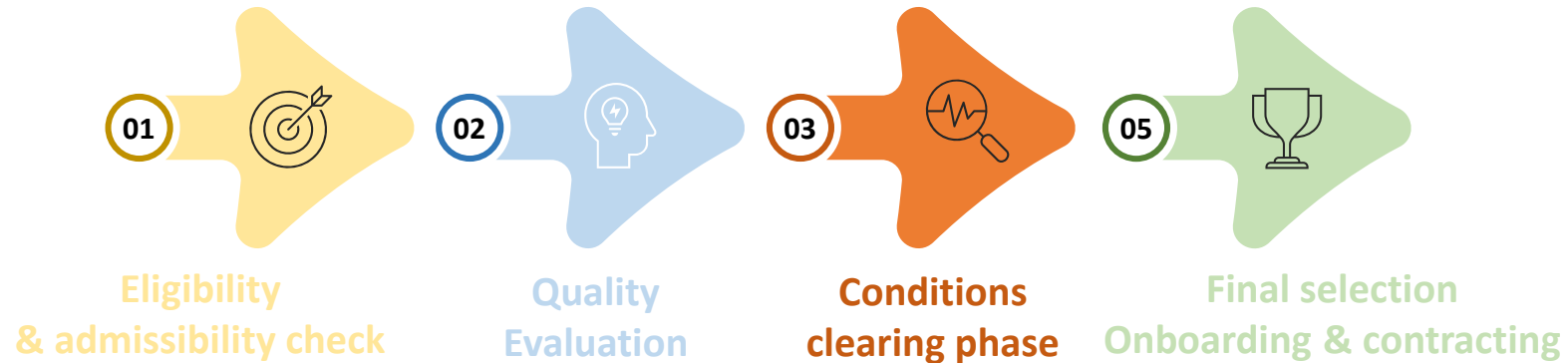
Score	
0	<i>None</i>
1	<i>Very poor</i>
2	<i>Poor</i>
3	<i>Fair</i>
4	<i>Good</i>
5	<i>Excellent</i>



New European Bauhaus  
beautiful | sustainable | together



## Evaluation and Selection Process



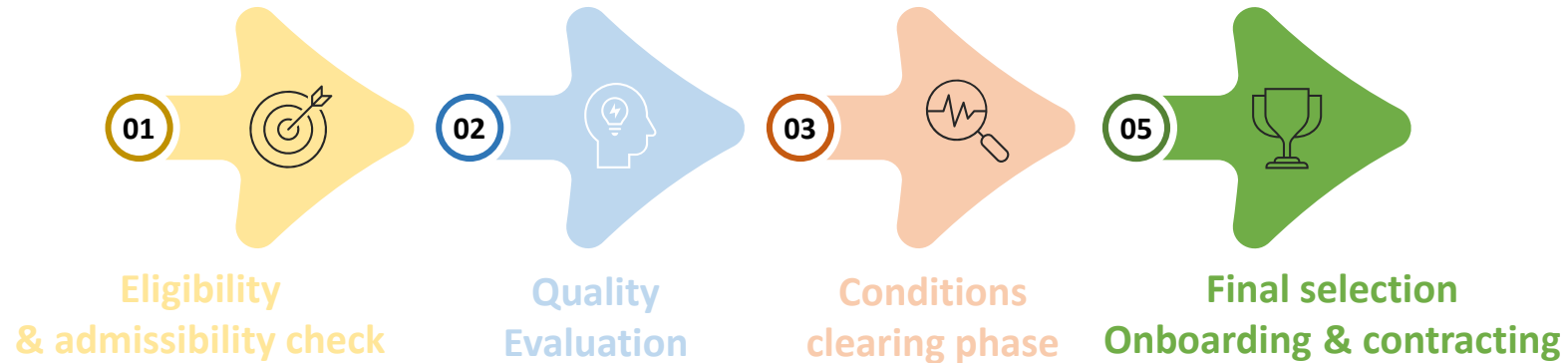
**4 projects** with up to 45K EUR and with a score of at **least 30 points (threshold)** will be funded. The selected projects might receive a **list of conditions** to improve their proposals before getting officially funded.



New European Bauhaus  
beautiful | sustainable | together



## Evaluation and Selection Process



After the conditions are fulfilled, the onboarding and contracting phase begin, and the project can start.



New European Bauhaus  
beautiful | sustainable | together



# INTERESTED IN APPLYING?

## HOW TO APPLY - APPLICATION PROCESS in NetSuite by 22 April 2025 at 17:00 CET

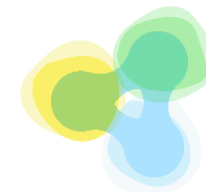
- **STEP 1:** Register in the [EU Funding & Tender Portal](#) and obtain a **valid PIC number**. If an organisation has already a PIC number, there is no need to register again. If you don't know if your organization already has a PIC number, you can verify directly on the EU Portal ([click here](#)).
- **STEP 2:** Register in the EIT UM NetSuite Platform, by submitting the [Partner Information Form \(PIF\)](#).

This step can take **up to 2 working days** so we strongly recommend that all project partners complete their registration several days prior to the submission deadline. If in a few hours, after submitting the PIF form, you don't receive an automatic e-mail with the log-in credentials, please contact the EIT UM Service Desk [servicedesk@eiturbanmobility.eu](mailto:servicedesk@eiturbanmobility.eu).

- **STEP 3:** access the [EIT Urban Mobility NetSuite platform](#) and find all our open calls under "Menu" --> "Call for Proposals" --> "Open Calls"



Read carefully the [Guidelines for Applicants](#) available on the [Call website](#)

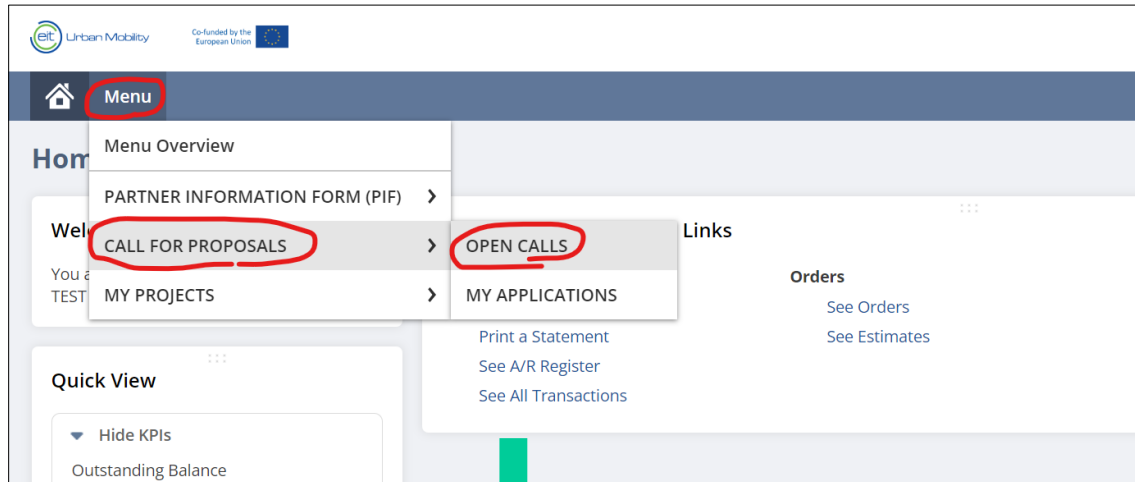


New European Bauhaus  
beautiful | sustainable | together

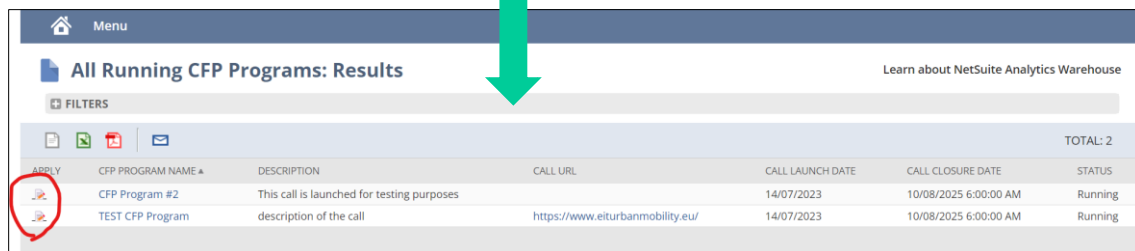


# INTERESTED IN APPLYING?

HOW TO APPLY - APPLICATION PROCESS in NetSuite by 22 April 2025 at 17:00 CET



The screenshot shows the NetSuite user interface. At the top left, there is a logo for 'eit Urban Mobility' and a note 'Co-funded by the European Union'. Below the logo is a 'Menu' button, which is circled in red. A dropdown menu is open, showing several options: 'Menu Overview', 'PARTNER INFORMATION FORM (PIF)', 'CALL FOR PROPOSALS' (circled in red), and 'MY PROJECTS'. The 'CALL FOR PROPOSALS' option has a sub-menu that is also open, showing 'OPEN CALLS' (circled in red) and 'MY APPLICATIONS'. Below the menu, there are sections for 'Quick View' (with a 'Hide KPIs' dropdown and 'Outstanding Balance') and 'Links' (with 'Orders' and sub-links 'See Orders' and 'See Estimates').

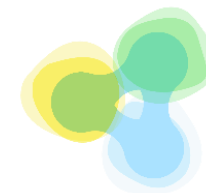


The screenshot shows the 'All Running CFP Programs: Results' page in NetSuite. A green arrow points from the 'OPEN CALLS' option in the menu above to the 'APPLY' button in the table below. The table has a header row with columns: 'CFP PROGRAM NAME', 'DESCRIPTION', 'CALL URL', 'CALL LAUNCH DATE', 'CALL CLOSURE DATE', and 'STATUS'. There are two rows of data. The first row is for 'CFP Program #2' and the second is for 'TEST CFP Program'. The 'APPLY' button is circled in red.

	CFP PROGRAM NAME	DESCRIPTION	CALL URL	CALL LAUNCH DATE	CALL CLOSURE DATE	STATUS
APPLY	CFP Program #2	This call is launched for testing purposes		14/07/2023	10/08/2025 6:00:00 AM	Running
	TEST CFP Program	description of the call	https://www.eiturbanmobility.eu/	14/07/2023	10/08/2025 6:00:00 AM	Running



Read carefully the Guidelines for Applicants available on the Call website

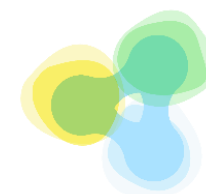


New European Bauhaus  
beautiful | sustainable | together



**HOW TO APPLY - APPLICATION PROCESS in NetSuite by 22 April 2025 at 17:00 CET**

The steps of the submission in NetSuite are explained in a live session & in the Guidelines for Applicants available on the Call website



New European Bauhaus  
beautiful | sustainable | together



## HOW TO APPLY - APPLICATION PROCESS in NetSuite by 22 April 2025 at 17:00 CET

- Read the **Guidelines for Applicants** document that are available on the Call website.
- **Register your organisation in NetSuite** or contact the ServiceDesk as early as possible.
- **Before submitting** your proposal, check that:
  - It fulfils the call requirements from the Call Manual
  - It is complete, readable and written in English, and submitted on time by the Lead Applicant in NetSuite
  - Your project partners are all registered in the system
- **Do not wait until the deadline** to submit your proposal to avoid technical problems due to possible overload of the system. Any proposals submitted after the deadline will not be considered. **Once your proposals is submitted it will not be possible to revert the process any longer, nor to submit a new updated version.**
- Contact PMO if you have any doubts/questions regarding NetSuite: [pmo@eiturbanmobility.eu](mailto:pmo@eiturbanmobility.eu)



New European Bauhaus  
beautiful | sustainable | together



# QUESTIONS?



**Thank you for  
participating**